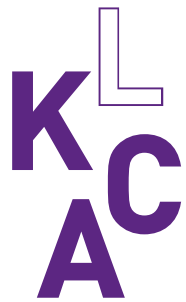


Grundtvig ART-AGE

Presentation WP 5



Landelijk Kennisinstituut Cultuureducatie en Amateurkunst - LKCA

Jan van den Eijnden, Claudia Marinelli & Chantal de Bonth

Content of the presentation

Part 1: Chantal de Bonth

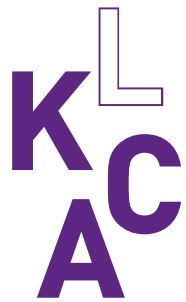
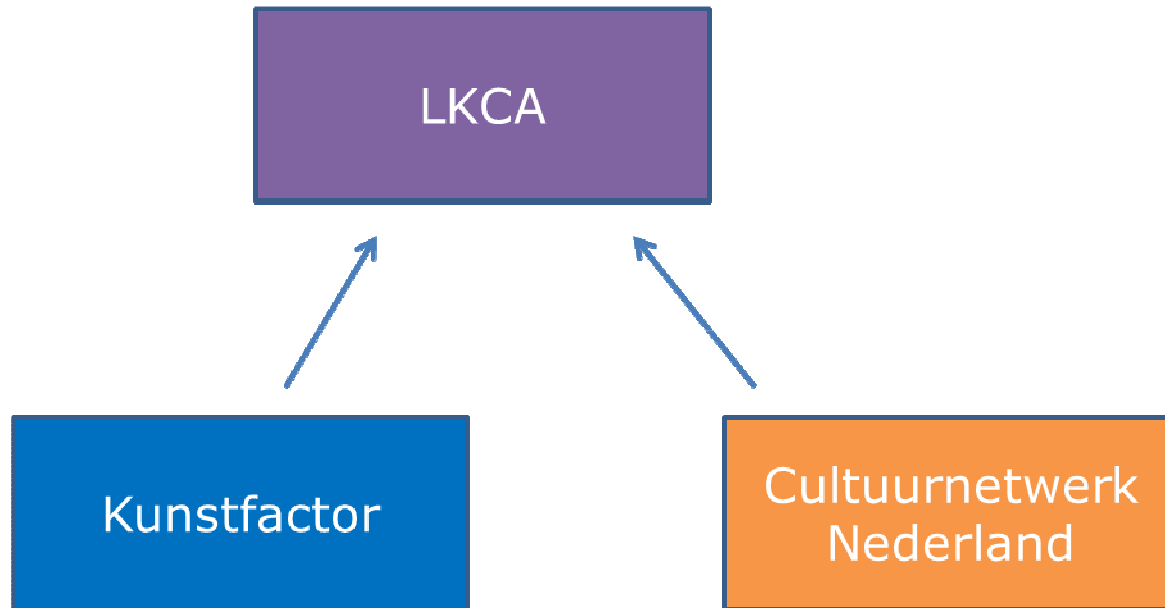
The current situation in The Netherlands concerning elderly people and arts participation

Part 2: Claudia Marinelli

Overview of actual research in The Netherlands in relation to elderly people and arts participation



Background on the organization



**LKCA: National Knowledge Institute for
Culture (arts) Education & Voluntary Arts**

Elderly people and arts participation in LKCA

2 programs concerning
this subject:

- Grundtvig Art-Age
- National program
“Long Live Arts”

L
K C
A

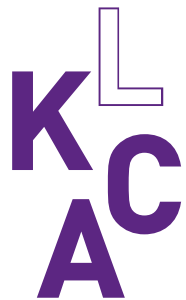


National program “Long Live Arts”

Involved partners:

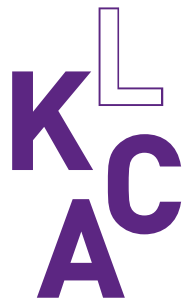
- Ministry of Education, Culture and Science
- Ministry of Health, Welfare and Sport
- Private funds
- Public funds
- LKCA

Conclusion: growing attention (local, regional, national)



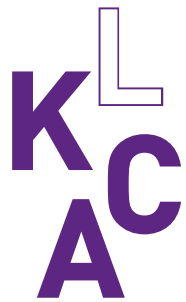
components of the national program

- June 18th: covenant
- Opinionated book for policymakers
- Presentation: www.langlevekunst.nl
- Imagine campaign
- Expert meeting for trainers (care and welfare sector) and art-teachers (cultural sector)
- Good practices
- Monitoring networks of welfare- and care institutions
- Distributing knowledge



components of the national program (2)

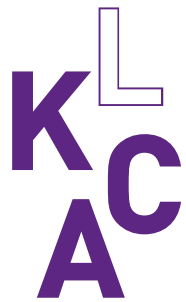
- **2014: module practising arts with seniors**
- **Autumn 2014: two-day European conference**
- **Summer 2015 and 2016: festival with conference**



Financial components:

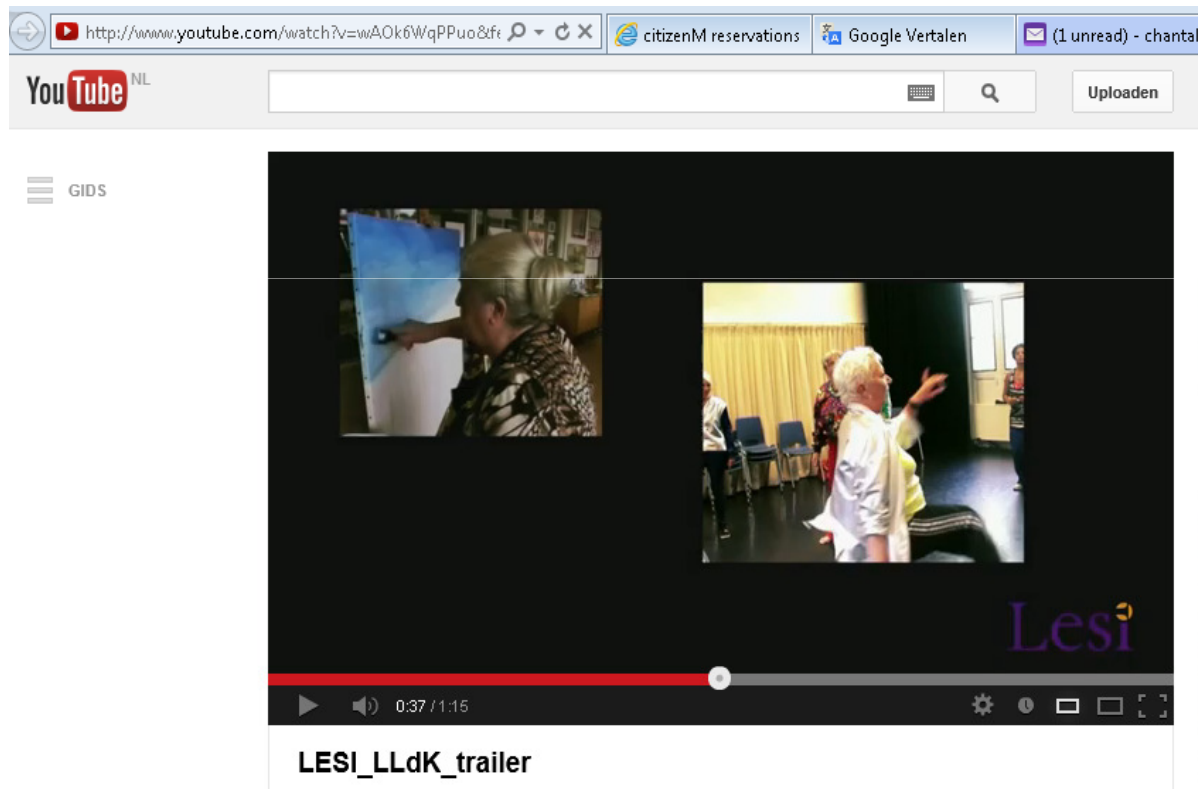
Separate subsidies for the subject elderly and arts participation:

- FCP
- Fund for the elderly RCOAK
- Sluyterman van Loo fund
- VSB



Trailer LESI

<http://www.youtube.com/watch?v=wAOk6WqPPuo&feature=youtu.be>

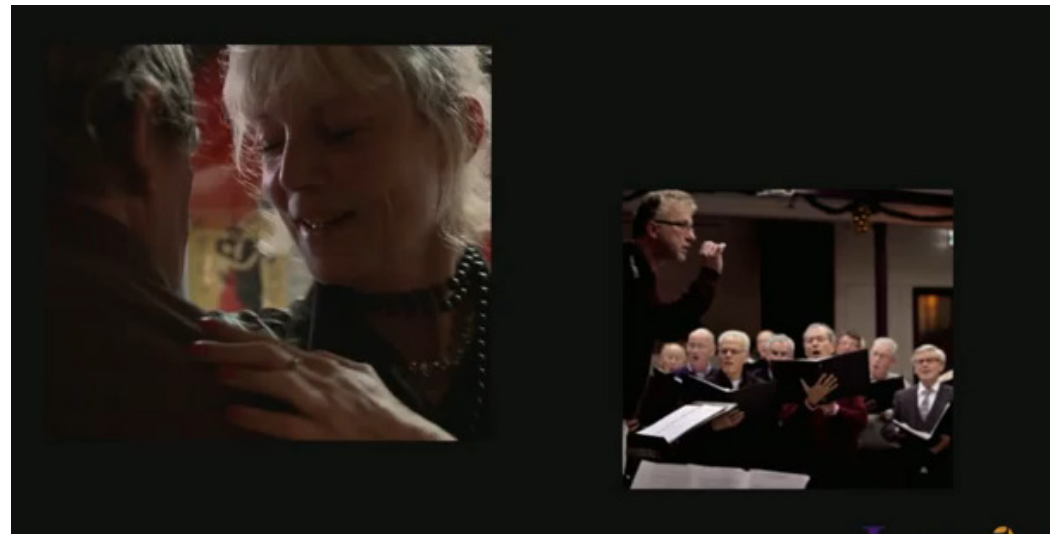


KL
KC
AC

Conclusion:

elderly people and arts participation is a topic which is very alive in the Netherlands!

KL
KAC
A



Research on cultural participation of elderly people in the Netherlands

landelijk
Kennisinstituut
cultuureducatie en
amateurkunst

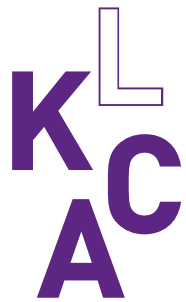
Type of Research

- Literature studies
- Quantitative analyses on cultural participation (passive and active)
- Qualitative research (less frequent)
- Evaluation studies (hardly)

K
A
C
L

Elderly people in the voluntary arts

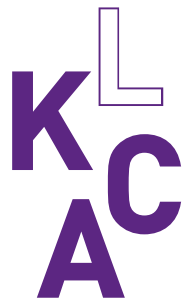
Grafiek, cijfers via Hans, Amalia, Lotte



Expert meeting May 2013

Participants from:

- **Social sciences**
- **Cultural sciences**
(Higher Education and Universities)
- **The Netherlands Institute for Social Research**

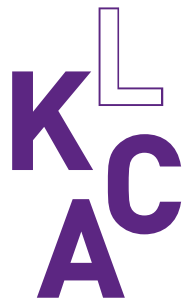


Concepts of learning

Broad definition

Practicing arts as a social enterprise having effects on different areas

- Biographical
- Esthetical
- Psychological
- Neurological



Learning effects

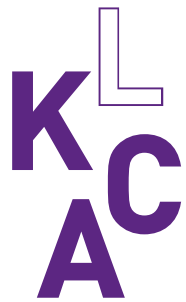
- Different art forms might have different effects
- Reciprocal learning – elderly people and teachers

KL
KAC
A



Elderly people and learning

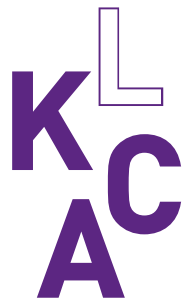
- The learning process of elderly people – what's specific?
- Didactical aspects
- Research based learning
- Learning is not necessarily progression



Learning process of elderly

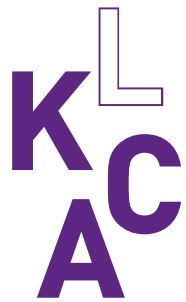
Is the difference:

- **Normative**
ways of perception – cultural ideas
- **Gradual**
other capabilities
- **Principal**
life experience – didactical relationship



Research methods

- **Multidisciplinary – art, social and health sciences**
- **Combination of qualitative and quantitative methods**
- **Small scale research – ethnographical studies**
- **Simulation research / field experiments**

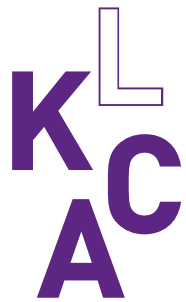




**K^L
A C**

Conclusions

- **Broad definition of learning**
- **Reciprocal learning process elderly – teachers**
- **Differences in learning process between elderly people and youngsters?**
- **Multidisciplinary studies desirable**
- **Combination of quantitative and qualitative methods**



Elderly people have a natural way of expressing themselves through the arts, whereas it is yet to be learned in youth.

**KL
AC**

